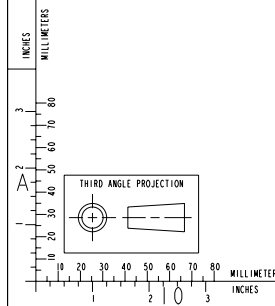


ITEM NUMBER	4953998
OPTIONS LIST	
AC9312	
BR9415	
EE9174	
EM9388	
FF90375	
FH9971	
FW9958	
HX9146	
LA9233	
LF9255	
LG90136	
OC9103	
OP9464	
PH9386	
RG9314	
SA9087	
ST9383	
SW9080	
TB2005	
VB9050	
WI9449	
XS9372	

REVISIONS		OWN	APP'D
ZONE	REV	DESCRIPTION	
00	RELEASED		



ENGINE SERVICE TEST PORTS/INSTALLATION CONNECTIONS			
1	AUXILIARY HEATER RETURN:	5/8 BARBED	
2	AUXILIARY HEATER SUPPLY:	5/8 BARBED	
3	BATTERY CONNECTION (STARTER) (+):	M10 X 1.5	
4	BATTERY CONNECTION (STARTER) (-):	M10 X 1.5	
5	BATTERY CONNECTION (ECM) (+):	4 PIN CONNECTOR	
6	BATTERY CONNECTION (ECM) (-):	4 PIN CONNECTOR	
7	COOLANT FILL:	Ø31.2 [1.23]	
8	COOLANT OVERFLOW TUBE:	7.9 I.D. [1.31]	
9	ENGINE OIL DRAIN:	M18 X 1.5	
10	ENGINE OIL FILL:	Ø32.1 [1.27]	
11	EXHAUST OUTLET CONNECTION (ELBOW):	Ø127 [5.00] O.D.	
12	EXHAUST OUTLET CONNECTION (TURBO):	4X M8 X 1.25 ∇ 17.8	
13	EXHAUST TEMP. /BACK PRESSURE TEST PORT:	1/4-18 NPT	
14	EXHAUST TEMP. /SW FLOW SENSOR	N/A	
15	FUEL INLET CONNECTION:	7/8-14 (45°-#10)	
16	FUEL INLET TEST PORT:	M10 X 1.0	
17	FUEL RETURN TO TANK CONNECTION:	3/4-16 (45°-#8)	
18	FUEL RETURN TEST PORT:	M10 X 1.0	
19	GEAR OIL COOLER DRAIN:	3/8 NPT	
20	GEAR OIL COOLER INLET:	M22 X 1.5	
21	GEAR OIL COOLER OUTLET:	M22 X 1.5	
22	OIL HEATER CONNECTION:	M22 X 1.5	
23	SEA WATER INLET:	Ø50.8 [2.00] O.D.	
24	SEA WATER INLET TEST PORT:	1/4-18 NPT	
25	SEA WATER OUTLET:	Ø50.8 [2.00] O.D.	
26	SEA WATER OUTLET TEST PORT:	1/4-18 NPT	
27	SHAFT LOG SEA WATER SUPPLY:	1/4 NPT	
28	ZINC ANODE:	4X 1/2-14 NPT	

PRODUCT GRAPHICS FILE
 NO ORIGINAL DRAWING EXISTS FOR THIS ITEM. THE ENGINEERING GRAPHICS DATA FOR THIS ITEM RESIDES IN THE PRODUCT GRAPHICS FILE AND IS CONTROLLED BY THE AGENCY DESIGNATED AS HAVING ITEM CONTROL.

LAST SECTION LETTER USED:	REF. DRAWING STANDARDS: ANSI Y14.5M ISO 81101	ITEM NAME	CUMMINS INC.
UNLESS OTHERWISE SPECIFIED DIMENSIONS ARE IN: MILLIMETERS () ARE IN: INCHES		IDENTIFIER	QSB 6.7L W/ ZF 851V
OWN	TWO/TANG	SIZE CODE (IDENT. NO.)	INSTALLATION DIAGRAM
CHD	UNCHECKED	ITEM NUMBER	4953998
APPD		SCALE: N/A	ITEM CONTROL: MCS
APPD			SHEET 1 OF 1

DO NOT SCALE THIS DRAWING
 THIS DRAWING/DATA FILE (AND THE INFORMATION SHOWN THEREON) IS CONFIDENTIAL AND PROPRIETARY AND SHALL NOT BE USED, DISCLOSED TO OTHERS, OR REPRODUCED BY ANY MEANS FOR ANY PURPOSE IN HARD COPY FORM OR IN MACHINE READABLE FILES, WITHOUT WRITTEN CONSENT OF CUMMINS INC., MARKETING CAD SERVICES DEPARTMENT.

PRELIMINARY
 NOTE: THIS DRAWING HAS NOT COMPLETED ALL REQUIRED PRODUCT RELEASE CHECK PROCESSES.